

POWER-LIFT TABLES

1,000 LB, 2,000 LB, 4,000 LB, and 6,000 LB Capacity OPERATING INSTRUCTIONS AND PARTS MANUAL

ATTENTION: TO INSURE SAFE AND EASY USE OF YOUR WESCO POWER-LIFT TABLE, READ THESE INSTRUCTIONS BEFORE USING.

Description

The Wesco Power-Lift Tables are designed for safe, easy, transportation, and lifting of materials.

Figure 1
Model PLT-20-2436



Wesco Industrial Products, Inc.
P.O. Box 47
Lansdale, PA 19446
Tel: 215-699-7031
Fax: 215-699-3836

For full range of Wesco products, request a catalog, or visit our Web site at <http://www.WESCOMFG.COM>
Contact the factory if you have any problems after reading these instructions, or for parts information and parts ordering.

Specifications

Model No.	Capacity	Raised Height	Table Size	Weight
PLT-10-1836 P/N 261108 (2 Post)	1,000 lb	47.5	18"x36"	260 lbs
PLTL-20-2436 P/N 261100	2,000 lb	47.5"	24" x 36"	400 lbs
PLTL-20-3248 P/N 261101	2,000 lb	47.5"	32" x 48"	544 lbs
PLT-20-2436 P/N 261102	2,000 lb	59"	24" x 36"	431 lbs
PLT-20-3248 P/N 261103	2,000 lb	59"	32" x 48"	590 lbs
PLT-40-2436 P/N 261104	4,000 lb	59"	24" x 36"	431 lbs
PLT-40-3248 P/N 261105	4,000 lb	59"	32" x 48"	590 lbs
PLT-60-2436 P/N 261106	6,000 lb	59"	24" x 36"	431 lbs
PLT-60-3248 P/N 261107	6,000 lb	59"	32" x 48"	590 lbs

Unpacking

When unpacking your unit, check carefully for shipping damage. If damage has occurred, file a claim with the delivering carrier within 24 hours and notify the dealer from whom the unit was purchased. Also check for missing parts.

General Safety Information

Warning: The Wesco Power-Lift Tables are designed for a wide range of uses. To insure safe use, the following instructions must be adhered to.

- (1) **Load Rating:** The capacity of your unit is shown on a metal tag on the base of the table. Do not exceed load rating printed on metal tag. Always use caution when using unit at or near capacity. **Note:** Make sure load is centered on table.

- (2) It is not recommended to use your unit for loads exceeding the size of the table.
- (3) Never move the unit unless the table is in the lowered position.
- (4) Wesco Power-Lift Tables are intended for movement of loads and lifting loads to a comfortable working position. The Power-Lift Tables are not intended for positioning loads in a raised position for an extended period of time. Do not leave unit unattended with load in raised position.
- (5) If custom alterations, to the Lift Tables, are *not* made at the factory, Wesco will void all warranties. User made alterations may result in unsafe conditions during use of unit.
- (6) Wesco floor locks are designed to prevent movement of unit during loading and unloading. They are not to be used to control table when being moved.
- (7) Do not use unit on inclines.
- (8) Inspect unit thoroughly daily before operating (See "Operation B").
- (9) When unit is not in use, it should be completely lowered.
- (10) Make sure that all attachments are completely tightened.
- (11) Do not operate a damaged unit until it is completely repaired.
- (12) Always remove load before repairing.
- (13) Only remove rear cover panel for repairs.

Operation

A) Operating Instructions:

- (1) To raise table, push "Up" button on hand control pendant.
- (2) To lower table, push "Down" button.
- (3) Whenever the control button is released, the movement of table will stop.
- (4) Authorized operators should read and understand all instructions, precautions and warnings. Improper use of this lift table could result in injury and/or damage to load and equipment.
 - Use lift table on hard level surfaces only.
 - Make sure load is evenly distributed, not loose or unstable.
 - Make sure travel, work area & overhead area are clear of obstructions before lifting or moving loads.
 - Make sure floor lock pad is in firm contact with floor before lifting or lowering load or using as a workstation.

B) Daily Maintenance Checks:

1. Battery
 - A. Check charge level.
 - B. Check for corroded and loose terminals.

- C. Visually inspect for any cracks or damage to battery casing.
- D) Battery Charging

D. Check for loose battery tie-downs.

2. Charger

- A. Inspect wire connections.
- B. Check power cord for nicks/damage.

3. Hydraulic System

- A. Inspect pump and cylinder for oil leaks.
- B. Check fluid level. Reservoir should be a minimum of one-half full with a good grade of hydraulic oil (Premco #32 recommended). **DO NOT use hydraulic brake fluid.**
- C. Check hydraulic fittings and hoses.
- D. Check piston rod for nicks/damage.

C) Monthly Maintenance Checks:

1. Battery

- A. Clean battery compartment area.
- B. Clean terminals.

2. Hydraulic System

- A. Clean & inspect hydraulic cylinder.

1. Plug charging cord into a nominal 120 volt grounded circuit outlet.

- The red POWER ON light will come on if connection is correct.
- The yellow 80% CHARGE light turns on to indicate that the battery is almost charged and that the charging current is beginning to taper down.
- The green FULL CHARGE light turns on when the charger has completed its charging cycle and will automatically switch from charging mode to maintenance mode. Leaving the charger cord plugged in will increase battery life as the maintenance mode (green light on) prevents battery self discharge.

2. The Power-Lift Table charging cord can be left plugged in for an indefinite period of time. The charger may be used anytime to extend the operating time of your battery. You do not have to wait until the battery is run down.

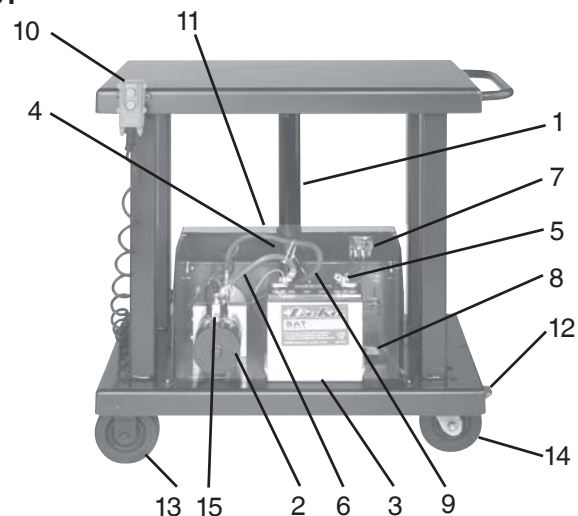
3. The voltmeter will indicate battery condition even when the charger cord is not plugged in.

TROUBLESHOOTING

Problem	Check	Service Required
Table does not operate. (Pump does not run)	Battery charger indicator lights.	Charge battery until yellow or green light is lit.
	Voltmeter indicates 12 volts or less.	Charge battery until yellow or green light is lit.
	Battery terminals and cables	Clean if corroded (white powder). Tighten terminal bolts.
Table does not lift to full height. (Pump runs)	Oil leaks	Tighten fittings. Replace hydraulic hose if required.
	Hydraulic oil level	Fill oil reservoir to proper level.
Table creeps down under load	Dirt in oil Holding valve open	Raise table to full height then lower in stages, 6" to 12" at a time to its lowest point. Repeat this cycle several times until dirt is cleared and unit operates properly. Replace oil with clean hydraulic oil if contaminated.
	Oil leaks	Tighten fittings. Replace hydraulic hose if required. Replace "O" rings in cylinder.
Pump runs continuously	Malfunctioning solenoid	Replace pump-motor solenoid.

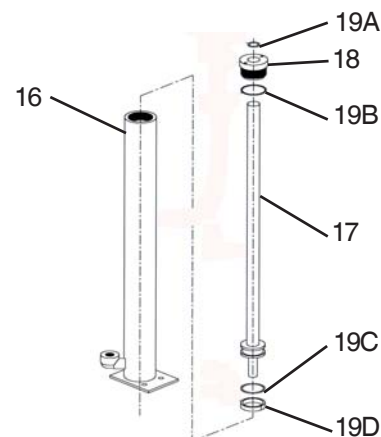
POWER-LIFT TABLE PARTS LIST

ITEM	QTY	DESCRIPTION	MODEL	
			LT	LTL
1	1	HYDRAULIC CYLINDER	051169	051178
2	1	POWER UNIT	109111	109111
3	1	BATTERY	109102	109102
4	1	VOLTMETER	109104	109104
5	1	BATTERY CABLE (NEG.)	052777	052777
6	1	BATTERY CABLE (POS.)	052778	052778
7	1	BOARD: INDICATOR LIGHT	109114	109114
8	1	BATTERY CHARGER	052762	052762
9	1	HYDRAULIC HOSE	125828	125828
10	1	REMOTE CONTROL ASS'Y	052726	052726
11	1	SWITCH	109325	109325
12	1	FLOOR LOCK	150001	150001
13	2	WHEEL	053770	053768
14	2	CASTER	054258	054265-1
15	1	SOLENOID	109117	109117



HYDRAULIC CYLINDER PARTS LIST

ITEM	QTY	DESCRIPTION	HYDRAULIC CYLINDER PARTS LIST	
			P/N 051169	P/N 051178
16	1	CYLINDER	050007	050134
17	1	PISTON	050003	050020
18	1	CYLINDER CAP	050006	050006
19	1	SEAL KIT	050725	050725
*19A		"O" RING	-----	-----
*19B		"O" RING	-----	-----
*19C		"O" RING	-----	-----
*19D		PISTON GUIDE RING	-----	-----



PARTS SHOWN WITH (*), COMPRISE "SEAL KIT" P/N 050725.

Warranty Repairs

If unit does not work properly, contact your dealer or the factory (215-699-7031), within one year of purchase date.

Non-Warranty Service

For units older than one year, repairs can be made easily on site with factory supplied parts, or repairs can be made at the factory. **NOTE: Do not send units to the factory for service without obtaining a "returned materials authorization" (RMA) number from the service department. We will not be responsible for goods returned without proper authorization.**

To Purchase Parts

A complete parts list with drawings appears in this manual. **To order parts** contact the factory at the phone or fax numbers shown on page 1 of this manual. **Ask for the Customer Service Department.**

WARNING: CHARGER (P/N 052762) IS ESPECIALLY DESIGNED FOR USE WITH WESCO BATTERY (P/N 109102), USE OF BATTERIES OTHER THAN WESCO'S MAY RESULT IN DAMAGE TO CHARGER, AND WILL VOID ALL WARRANTIES.

LIMITED WARRANTY

Wesco Industrial Products, Inc. (WESCO) warrants to the purchaser of this product for a period of one year from the date of purchase that this product shall be free of defects in material and/or workmanship, as follows:

1. WESCO will supply, at no charge, new or rebuilt replacements for any part that fails through a defect in material and/or workmanship during the warranty period. To obtain warranty service, you must deliver the product prepaid, to the WESCO factory.
2. This warranty does not cover any product or product part which has been subject to accident, misuse, abuse or negligence. WESCO shall only be liable under this warranty if the product is used in the manner intended by the manufacturer as specified in the written instructions furnished with this product.

REPAIR OR REPLACEMENT AS PROVIDED UNDER THIS WARRANTY IS THE EXCLUSIVE REMEDY OF THE PURCHASER. ANY EXPRESS WARRANTY NOT PROVIDED IN THIS WARRANTY DOCUMENT, AND ANY REMEDY FOR BREACH OF CONTRACT THAT, BUT FOR THIS PROVISION, MIGHT ARISE BY IMPLICATION OR OPERATION OF LAW, IS HEREBY EXCLUDED AND DISCLAIMED. UNDER NO CIRCUMSTANCES SHALL WESCO BE LIABLE TO PURCHASER OR ANY OTHER PERSON FOR ANY INCIDENTAL OR CONSEQUENTIAL DAMAGES, WHETHER ARISING OUT OF BREACH OF WARRANTY, EXPRESS OR IMPLIED, A BREACH OF CONTRACT OR OTHERWISE. EXCEPT TO THE EXTENT PROHIBITED BY APPLICABLE LAW, ANY IMPLIED WARRANTY OF MERCHANTABILITY AND FITNESS FOR ANY PARTICULAR PURPOSE ARE EXPRESSLY LIMITED IN DURATION TO THE DURATION OF THIS LIMITED WARRANTY.

Some states do not allow the exclusion or limitation of incidental or consequential damages, or allow limitations on how long any implied warranty lasts, so the above limitations may not apply to you. This warranty gives you specific legal rights, and you may also have other rights which vary from state to state.